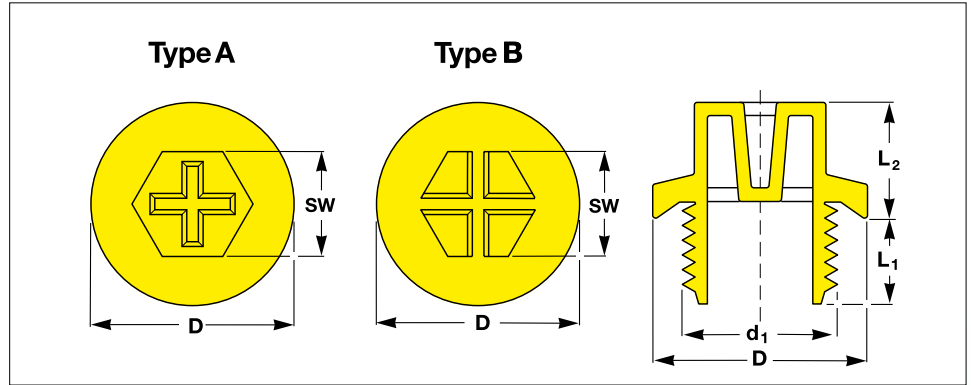


Threaded Sealing Plugs, PA 6, yellow

EP 435 plugs are specially designed to perfectly seal internal threads to avoid unwanted fluid leakage

prompt

MADE-TO-ORDER
VOLUME



DIN EN ISO 228-1 / DIN 3852-2

All dimensions in mm

Thread Size	Flange	Total height		Spanner Size	Type	Reference No.
		Thread Length	Head Length			
d_1	D	L_1	L_2	SW		
G 1/8	16.8	7.5	11.2	13	A	EP 435 – .1/8"
G 1/4	19.0	7.5	11.3	13	A	EP 435 – .1/4"
G 3/8	22.0	7.6	12.5	17	A	EP 435 – .3/8"
G 1/2	27.0	10.6	14.7	19	A	EP 435 – .1/2"
G 3/4	32.2	10.5	14.2	24	A	EP 435 – .3/4"
G 1	39.7	13.6	15.8	27	B	EP 435 – 1."
G 1 1/4	49.8	13.5	17.8	36	B	EP 435 – 1.1/4"
G 1 1/2	55.4	13.5	16.5	41	B	EP 435 – 1.1/2"
G 2	68.2	13.5	16.6	55	B	EP 435 – 2."

NEW UN/UNF

Metric DIN 3852-1 / DIN ISO 6149-1

All dimensions in mm

Thread Size	Flange	Thread Length	Head Length	Spanner Size	Type	Reference No.
M 10 × 1	14.0	5.5	11.5	10	B	EP 435 – M 10 × 1
M 12 × 1.5	17.2	8.2	11.5	13	A	EP 435 – M 12 × 1.5
M 14 × 1.5	19.1	10.1	11.2	13	A	EP 435 – M 14 × 1.5
M 16 × 1.5	21.7	7.5	11.6	17	A	EP 435 – M 16 × 1.5
M 18 × 1.5	23.8	8.6	12.3	17	A	EP 435 – M 18 × 1.5
M 20 × 1.5	25.8	8.5	15.5	19	A	EP 435 – M 20 × 1.5
M 22 × 1.5	26.7	8.6	15.5	19	A	EP 435 – M 22 × 1.5
M 24 × 1.5	31.2	10.6	15.2	24	A	EP 435 – M 24 × 1.5
M 26 × 1.5	31.8	8.5	15.5	24	A	EP 435 – M 26 × 1.5
M 27 × 2	32.1	11.5	15.4	24	A	EP 435 – M 27 × 2
M 33 × 2	39.6	11.5	15.6	27	B	EP 435 – M 33 × 2
M 42 × 2	49.8	11.5	16.6	36	B	EP 435 – M 42 × 2

Material :
Premium, impact resistant Nylon
(PA 6)

Standard Colour :
yellow

EP 435 plugs are specially designed to perfectly seal internal threads to avoid unwanted fluid leakage.

 sealwell

Should your requirements not be shown please ask for a separate quotation.

SEALWELL products and specifications are subject to improvement and change without notice.

Threaded Sealing Plugs, PA 6, yellow

EP 435 plugs are specially designed to perfectly seal internal threads to avoid unwanted fluid leakage

TRIPLE ADVANTAGE of CAPTOP®

QUALITY. Protective sealing during painting processes and testing To protect unified/straight threaded ports and fittings according to DIN 3852-1 Metric, DIN ISO 6149-1 BSP, SAE J 1926 UN/UNF.

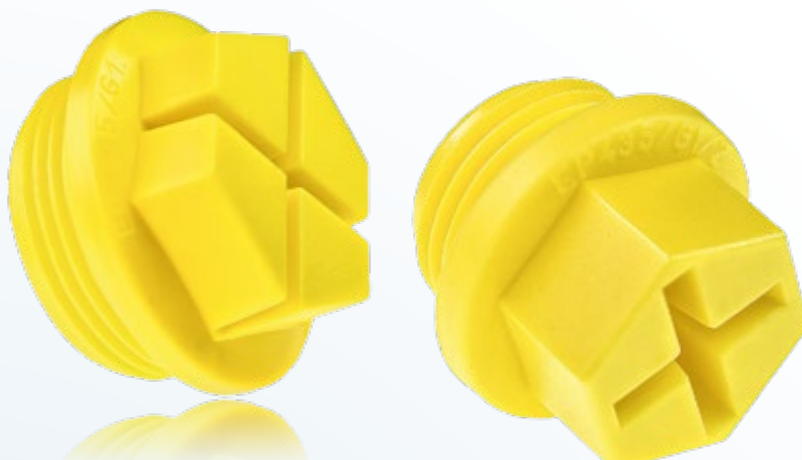
This plug is engineered with five complete threads to provide a tight fit. The "sealing lip" enables each plug to provide a secure seal to a specific torque for each size. EP 435 plugs can be fitted and removed with a screwdriver, socket wrench, power tool or by hand. Nylon offers high resistance against hydraulic fluids, acids, base alkalines and solvents.

AVAILABILITY. With over 400 million moulded components shipped from our Oststeinbek / Hamburg logistics center we provide the fastest on time delivery service to all markets and industries.

PHILOSOPHY. Innovative protective closures at the best price in the market.



CAPTOP®



NEW UN/UNF

ISO 11926-1

All dimensions in mm

Thread Size	Flange	Total height		Spanner Size	Type	Reference No.
		Thread Length	Head Length			
d ₁	D	L ₁	L ₂	SW		
7/16 – 20 UNF	21.0	10.0	10.2	13	A	EP 435 – .7 / 16" – 20 UNF
1/ 2 – 20 UNF	22.8	9.6	11.3	13	A	EP 435 – .1/ 2" – 20 UNF
9/16 – 18 UNF	24.8	9.5	11.3	13	A	EP 435 – .9 / 16" – 18 UNF
5/ 8 – 18 UNF	24.9	10.5	13.2	17	A	EP 435 – .5 / 8" – 18 UNF
3/ 4 – 16 UNF	25.6	8.9	14.3	17	A	EP 435 – .3 / 4" – 16 UNF
7/ 8 – 14 UNF	33.9	12.5	13.6	19	A	EP 435 – .7 / 8" – 14 UNF
1 1/16 – 12 UN	40.7	12.5	13.4	24	A	EP 435 – 1.1 / 16" – 12 UN
1 5/16 – 12 UN	42.1	13.5	16.5	27	A	EP 435 – 1.5 / 16" – 12 UN
1 5/ 8 – 12 UN	55.5	15.7	16.3	36	A	EP 435 – 1.5 / 8" – 12 UN
1 5/ 8 – 16 UN	57.6	15.8	16.6	36	A	EP 435 – 1.5 / 8" – 16 UN

Material :
Premium, impact resistant Nylon (PA 6)

Standard Colour :
yellow

Individual Productions :
On request we develop and produce individually tailored solutions next to the standard items of this range: additional dimensions, different materials and new colours

We would be pleased to advise you.

 sealwell

Should your requirements not be shown please ask for a separate quotation. SEALWELL products and specifications are subject to improvement and change without notice.