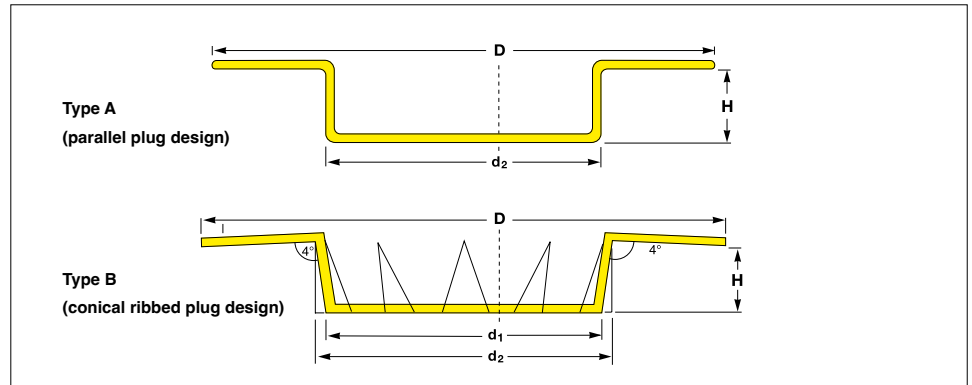


# Valve Flange Protection Plugs

Provides cushioned protection for flange face  
 Suitable for DIN 2402 flanges  
 DN 10 – DN 400



All dimensions in mm

DIN 2402	Dimensions					Standard Pack	Reference No.
	d <sub>1</sub>	d <sub>2</sub>	Plug Design	D	H		
DN 10	7.6	10.9	conic	40.0	9.7	5.000	EP 300 / 010 - R
DN 15	12.2	16.8	conic	45.0	10.0	5.000	EP 300 / 015 - R
DN 20	16.1	22.5	conic	58.3	14.5	2.000	EP 300 / 020 - R
DN 25	20.1	26.0	conic	68.0	15.0	1.500	EP 300 / 025 - R
DN 32	26.5	33.5	conic	78.6	14.6	1.000	EP 300 / 032 - R
DN 40	34.5	41.5	conic	89.0	15.0	700	EP 300 / 040 - R
DN 50	45.0	51.6	conic	103.5	15.0	500	EP 300 / 050 - R
DN 65	58.5	66.0	conic	122.0	20.0	250	EP 300 / 065 - R
DN 80	74.0	81.0	conic	138.8	20.0	200	EP 300 / 080 - R
DN 100	94.0	103.0	conic	162.0	20.4	100	EP 300 / 100 - R
DN 125	118.0	127.0	conic	188.0	20.0	125	EP 300 / 125 - R
DN 150	144.0	153.2	conic	215.0	20.3	80	EP 300 / 150 - R
DN 200	194.5	204.5	conic	268.0	25.0	60	EP 300 / 200 - R
DN 250	247.0	252.0	conic	344.0	25.0	50	EP 300 / 250
DN 300		303.0	parallel	408.0	20.5	52	EP 300 / 300
DN 350		355.0	parallel	455.0	21.0	50	EP 300 / 350
DN 400		406.0	parallel	510.0	23.0	40	EP 300 / 400

**Material :**  
 LLD-PE,  
 linear low density polyethylene

**Standard Colour :**  
 yellow

Provides cushioned protection for flange face. Suitable for DIN 2402 flanges.

These plugs have a tapered body and a wide flange to protect the entire machined surface of valve flange.

 sealwell

Should your requirements not be shown please ask for a separate quotation.  
 SEALWELL products and specifications are subject to improvement and change without notice.

# Valve Flange Protection Plugs

Provides cushioned protection for flange face

Suitable for DIN 2402 flanges

DN 10 – DN 400

## TRIPLE ADVANTAGE of CAPTOP®

**QUALITY.** Provides cushioned protection for flange face. Suitable for DIN 2402 flanges. Type B offers a more secure fit than Type A in the bore of valves and machined parts with larger bore tolerances. Number of ribs are 4-8 depending on the size.

**AVAILABILITY.** With over 400 million moulded components shipped from our Oststeinbek / Hamburg logistics center we provide the fastest on time delivery service to all markets and industries.

**PHILOSOPHY.** Innovative protective closures at the best price in the market.



CAPTOP®



**Material :**

LLD-PE,  
linear low density polyethylene

**Standard Colour :**

yellow

**Individual Productions :**

On request we develop and produce individually tailored solutions next to the standard items of this range: additional dimensions, different materials and new colours

We would be pleased to advise you.

 sealwell